



58 The Avenue

St. Pauls Cray, Orpington, BR5 3DJ

Offers in the region of £825,000

A thoughtfully extended semi-detached house, positioned on a sought-after residential road.

The property offers well-proportioned and versatile accommodation, comprising five double bedrooms. The master bedroom includes an en suite bathroom, along with a dedicated dressing area.

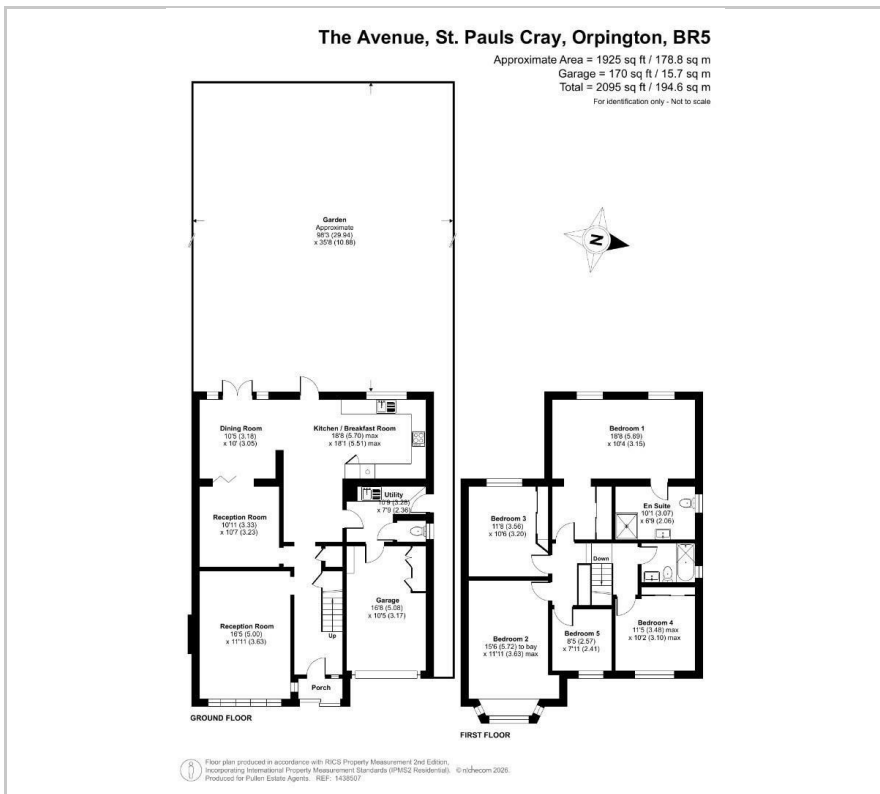
- Extended, five bedroom semi detached house
- Garage
- Off street parking
- Substantial garden
- Kitchen diner

Viewing

Please contact our Chislehurst Office on 02034899589 if you wish to arrange a viewing appointment for this property or require further information.



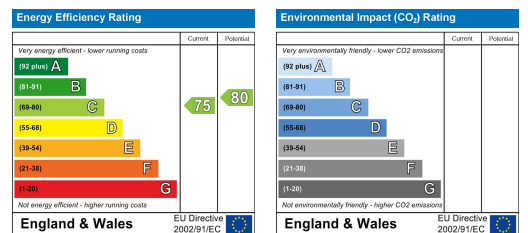
Floor Plan



Area Map



Energy Efficiency Graph



These particulars, whilst believed to be accurate are set out as a general outline only for guidance and do not constitute any part of an offer or contract. Intending purchasers should not rely on them as statements of representation of fact, but must satisfy themselves by inspection or otherwise as to their accuracy. No person in this firm's employment has the authority to make or give any representation or warranty in respect of the property.